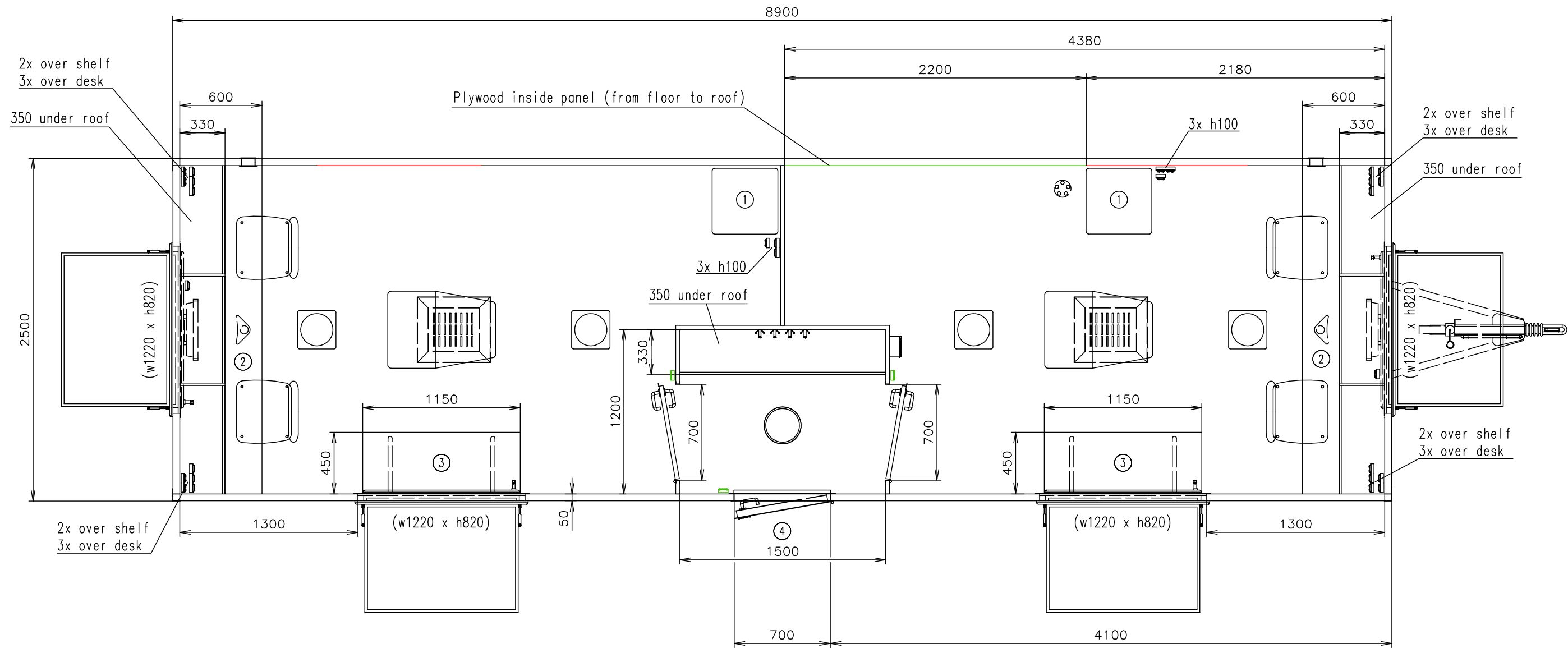


Connection hoses and cables	
Water hose:	✗
Waste water hose:	✗
Electric cable:	✓



Notes:

Interior height:	2100 mm	Total weight:	3500 kg
Color:	RAL 9010	Tare weight-estimate:	2300 kg
Floor:	PVC gray	Centre of wheels from rear side:	4490 mm
Date:	23.10.2019	Wheels:	185 R14C

EUROWAGON

Drawing number:

3402-89-1_1/2

(Cabling and piping is not shown on the 3D views and drawings)

Connection hoses and cables	
Water hose:	✗
Waste water hose:	✗
Electric cable:	✓

⊙ Electric connection (on the chassis) (230V-16A)

⏻ Power point

⏻ Double power point

⏻ Light switch

⏻ Switch board (under roof)

⊙ LED droplight

○ LED droplight

⏻ Roof A/C+heating (Dometic Freshjet 1700)

⏻ Heating (750W)

⏻ Window opening inside + shutter (870 over floor)

⏻ Chair

⏻ Ventilation ø120

⏻ Shelf

↑ Clothes hanger

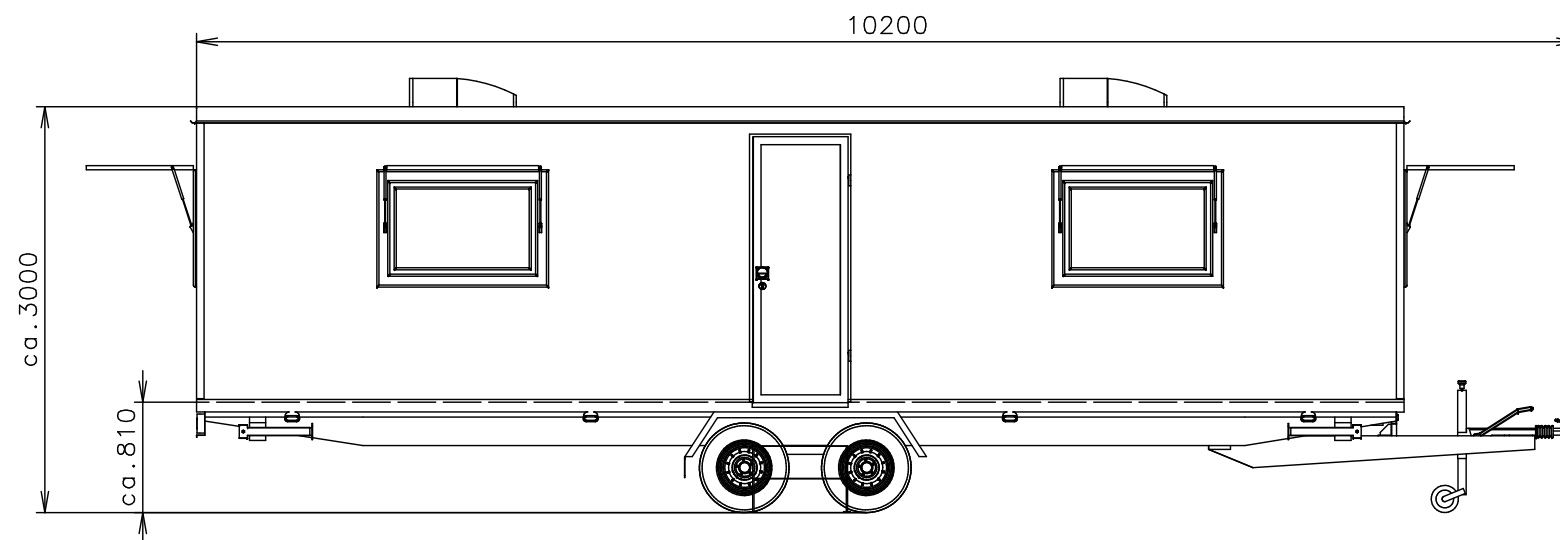
— Cork noticeboard (1200x800)

① Fridge

② Working desk (permanent fixed) – h740

③ Foldable desk – h740

④ Standard free standing stairs



(Cabling and piping is not shown on the 3D views and drawings)

Notes:

Interior height:	2100 mm	Total weight:	3500 kg
Color:	RAL 9010	Tare weight-estimate:	2300 kg
Floor:	PVC gray	Centre of wheels from rear side:	4490 mm
Date:	23.10.2019	Wheels:	185 R14C

EUROWAGON

Drawing number:

3402-89-1_2/2