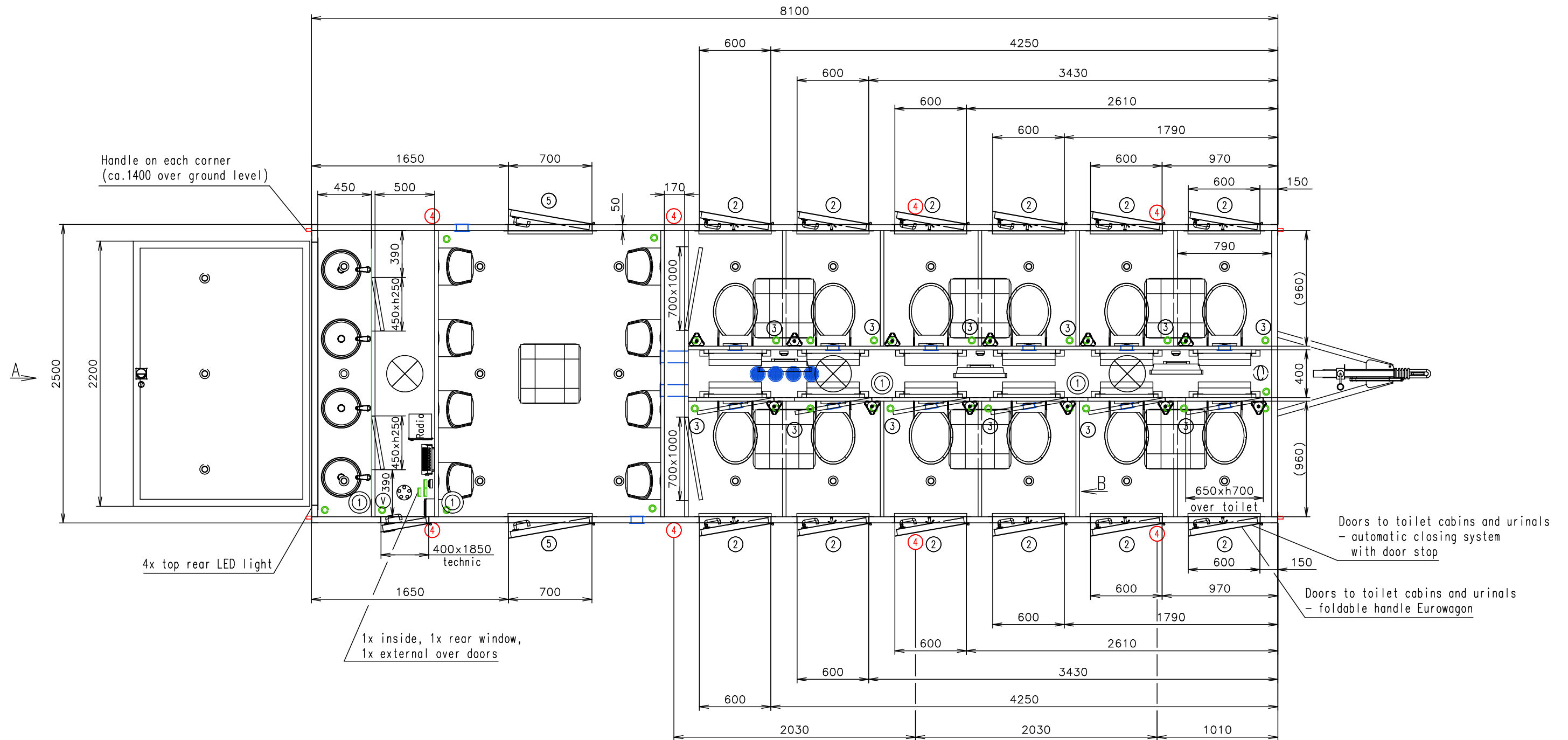


Connection hoses and cables	
Water hose:	✓ 2x
Waste water hose:	✗
Electric cable:	✓



Working desks in waterproof compact desk Egger (dark color)

Chassis - 2x extra cabling for rear reverse lights -
- between main light and reg. plate light

Doors - without weatherboard Toilet paper holders - customer supply

Waste water from sinks and urinals under floor to the connection point

Notes:

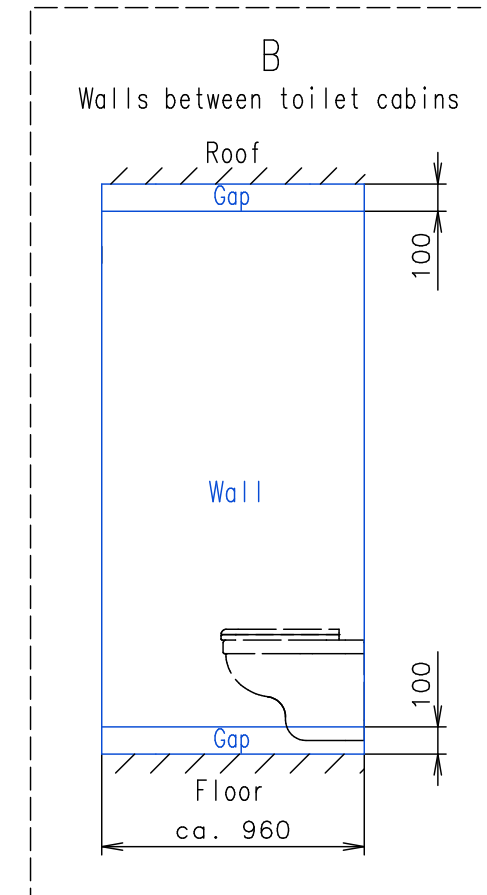
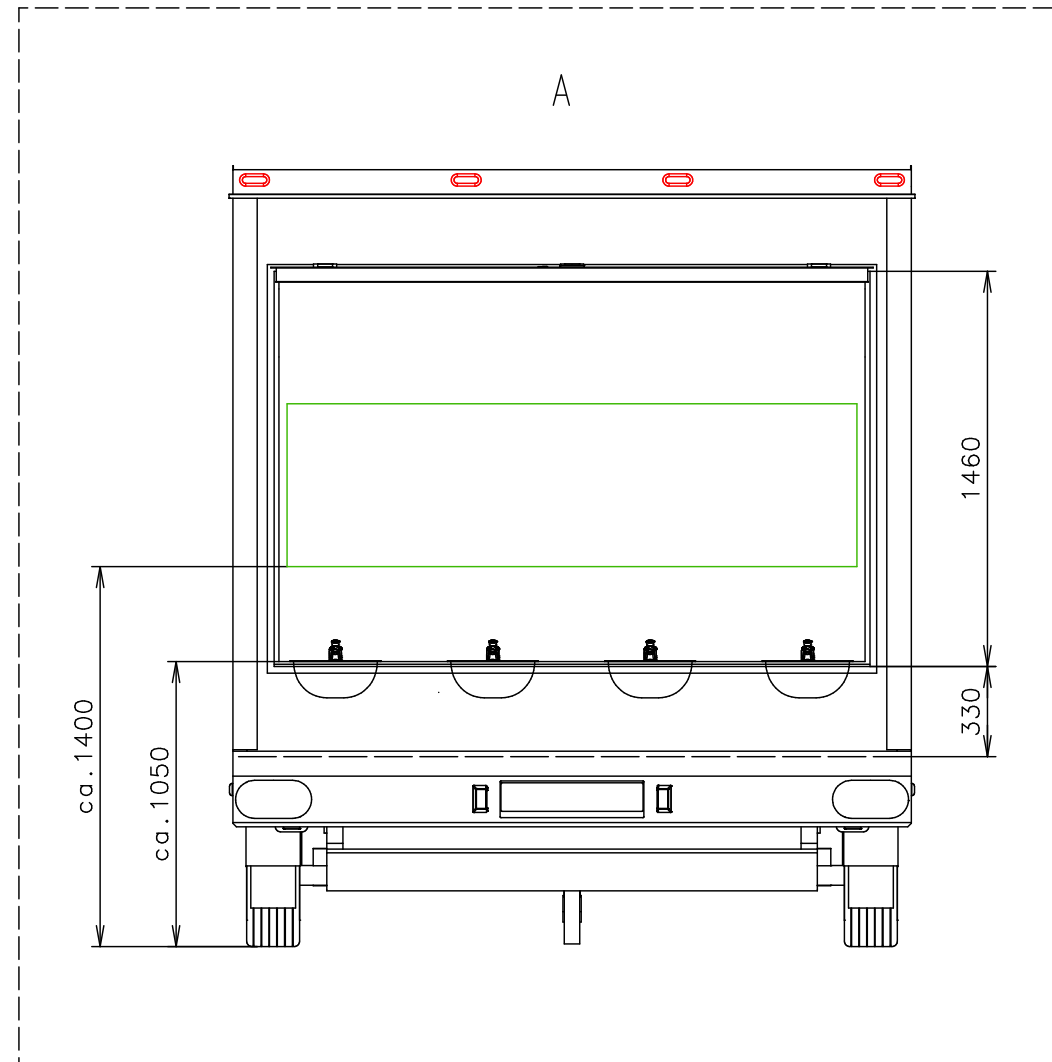
Interior height:	2100 mm	Total weight:	3500 kg
Color:	RAL 7042 (gray)	Tare weight-estimate:	3200 kg
Floor:	PVC black	Centre of wheels from rear side:	4210 mm
Date:	25.9.2018	Wheels:	195/50 R13C

EUROWAGON

Drawing number:
3082-81-1_1/3 (Pöka)

(Cabling and piping is not shown on the 3D views and drawings)

Connection hoses and cables	
Water hose:	✓ 2x
Waste water hose:	✗
Electric cable:	✓



Working desks in waterproof compact desk Egger (dark color)

Chassis – 2x extra cabling for rear reverse lights –
– between main light and reg. plate light

Doors – without weatherboard Toilet paper holders – customer supply

Notes: Waste water from sinks and urinals under floor to the connection point

Interior height:	2100 mm	Total weight:	3500 kg
Color:	RAL 7042 (gray)	Tare weight-estimate:	3200 kg
Floor:	PVC black	Centre of wheels from rear side:	4210 mm
Date:	25.9.2018	Wheels:	195/50 R13C

EUROWAGON

Drawing number:
3082-81-1_2/3 (Pöka)

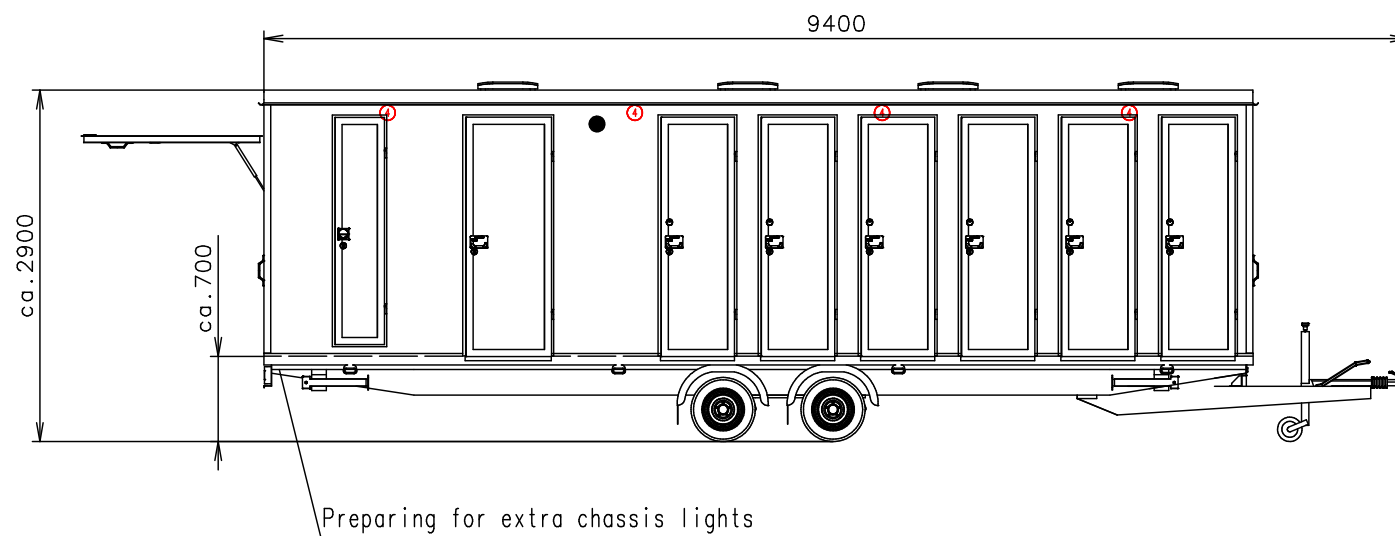
(Cabling and piping is not shown on the 3D views and drawings)

Connection hoses and cables	
Water hose:	✓ 2x
Waste water hose:	✗
Electric cable:	✓

- Ⓟ 2x Water connection 3/4" (through the floor)
1x for left side (6x toilet + 4x urinal + 2x sink)
1x for right side (6x toilet + 4x urinal + 2x sink)
+ connection between them to allowed use only one for whole wagon
+ option that run all four sinks with left or right side
- Ⓢ Electric connection (through the floor)
(230V-16A)
- Ⓣ Effluent connection ø110 (through floor)
- Ⓜ Power point
- Ⓛ Light switch
- Ⓜ Switch board (1200 over floor)

- ⊗ Sensorlight
- ⊙ Spot light
- ▬ Heating (500W)
- ▬ Heating (750W)
- ⊙ Floor drain hole
- Ⓢ Sink ø335 (stainless steel) +
standard water tap (only cold water)
- Ⓢ Hanging toilet
- Ⓢ Urinal - Vitra Siko (water flush)

- Ⓢ Roof window Dometic (400x400)
- ▬ Ventilation ø120
- Ⓢ Brush toilet
- Ⓢ Clothes hanger
- ▬ Mirror (2100 x 600)
- ① Speaker - in the roof
- ② Foldable stairs Serena
- ③ Stainless steel tube (vertically) for extra 3 toilet papers
- ④ External light LED 071/730 (on the side under alu roof)
(through light switch in technic room)
- ⑤ Foldable stairs Serena + feet



Working desks in waterproof compact desk Egger (dark color)

Chassis - 2x extra cabling for rear reverse lights -
- between main light and reg. plate light

Doors - without weatherboard Toilet paper holders - customer supply

Waste water from sinks and urinals under floor to the connection point

Notes:

Interior height:	2100 mm	Total weight:	3500 kg
Color:	RAL 7042 (gray)	Tare weight-estimate:	3200 kg
Floor:	PVC black	Centre of wheels from rear side:	4210 mm
Date:	25.9.2018	Wheels:	195/50 R13C

EUROWAGON

Drawing number:
3082-81-1_3/3 (Pöka)

(Cabling and piping is not shown on the 3D views and drawings)