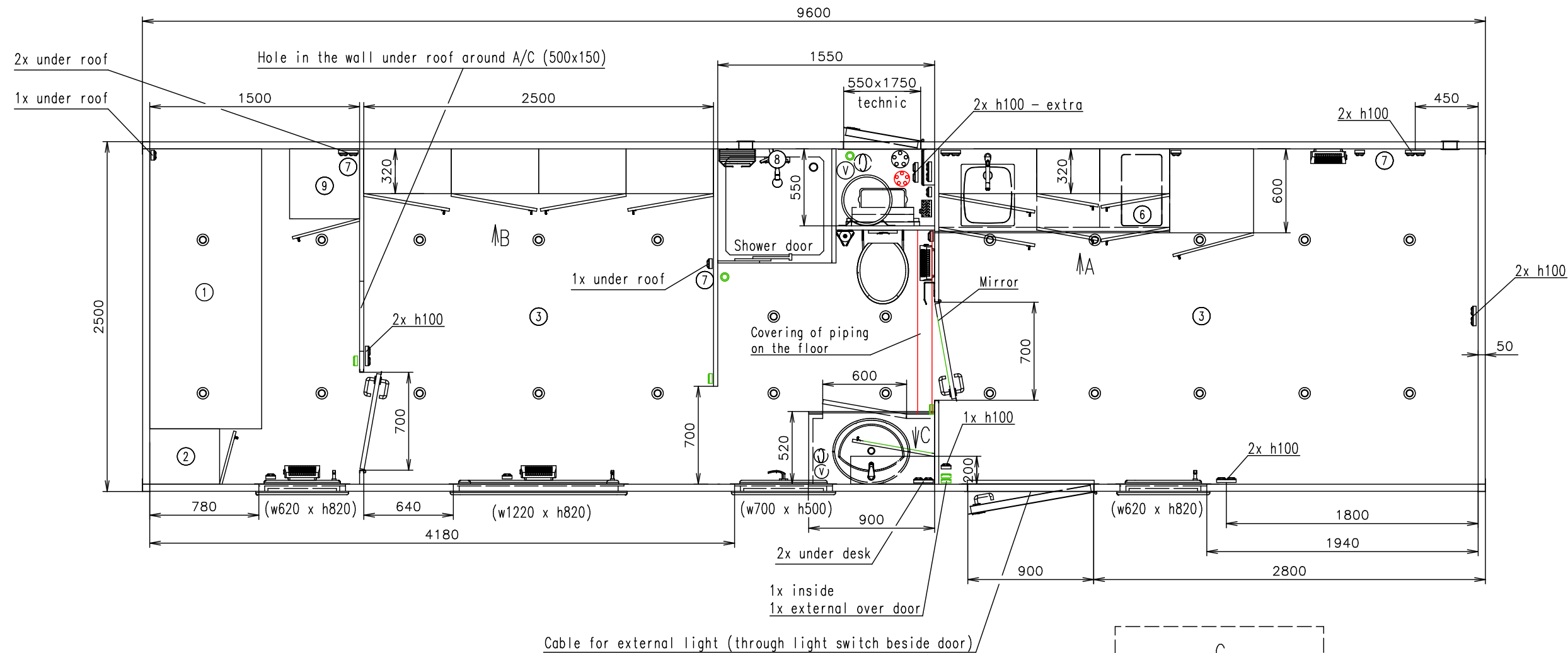
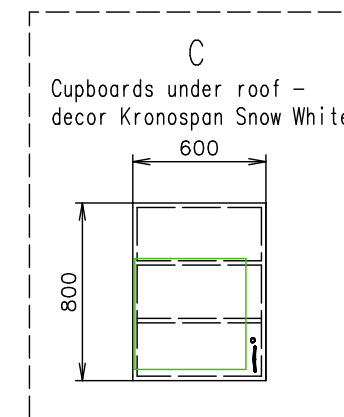
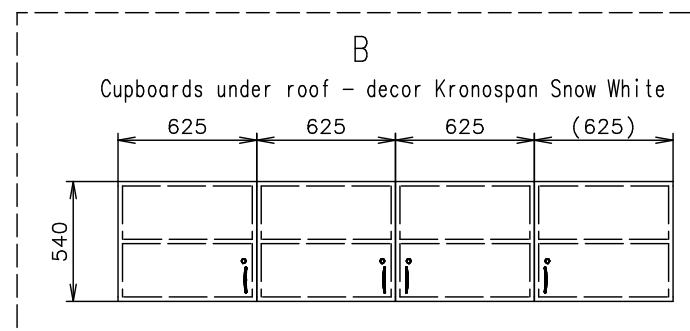
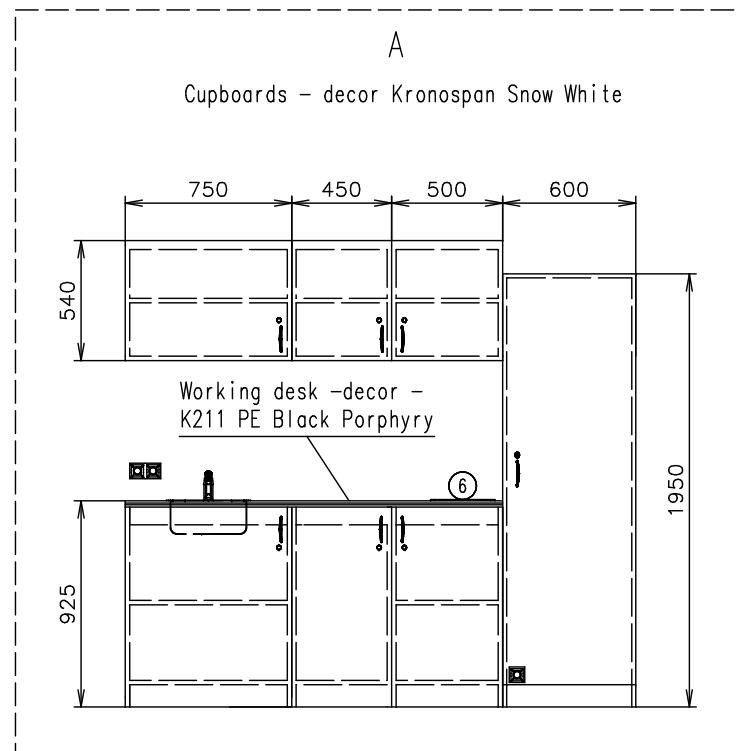


Connection hoses and cables		
Water hose:	✓	Geka
Waste water hose:	✓	Geka
Electric cable:	✓	



Cable for external light (through light switch beside door)



EWK frame - thickness 4mm

Cupboards - decor Kronospan Snow White

Notes: Switch board - incl. digital electricity meter

Interior height:	2200 mm	Total weight:	-
Color:	RAL 9010	Tare weight-estimate:	2500 kg
Floor:	PVC Supreme plus 110	Centre of wheels from rear side:	-
Date:	18.12.2023	Wheels:	-

EUROWAGON

Drawing number:
4366-96-2 EWK_1/2 (Münz)

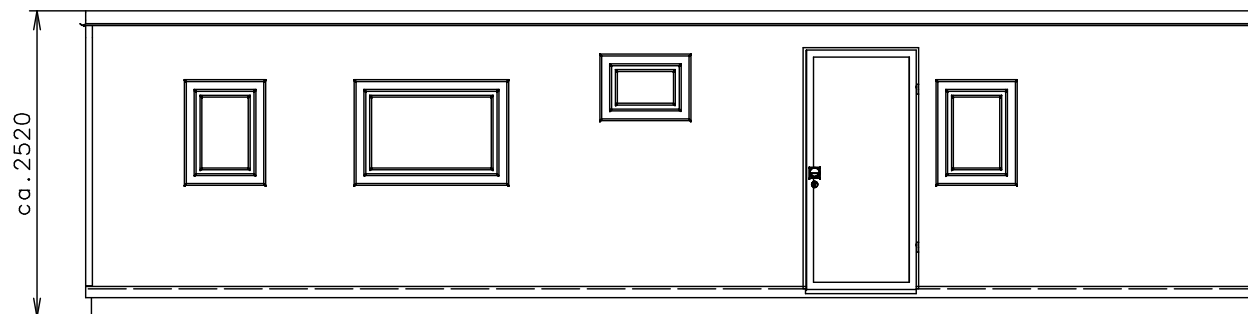
(Cabling and piping is not shown on the 3D views and drawings)

Connection hoses and cables	
Water hose:	✓ Geka
Waste water hose:	✓ Geka
Electric cable:	✓

- Ⓥ Water connection 3/4" (through the wall) (connection point Geka 3/4")
- Ⓢ Electric connection (through the wall) (400V-32A)
- Ⓣ Effluent connection 1" (connection point Geka 3/4")
- Ⓜ Power point
- Ⓜ Double power point
- Ⓢ Power point (400V-16A) – own FI breaker
- Ⓛ Light switch
- Ⓜ Switch board (1200 over floor)
- Ⓢ LED spotlight
- Ⓜ Heating (500W)
- Ⓜ Heating (200W)
- Ⓢ Floor drain hole

- ☐ Shower (800x800) Cola
- ☐ Kitchen sink Alveus Basic 10 + standard water tap
- ☐ Wash-basin (built-in) Multi 1690 (550x470) + standard water tap
- ☐ Hanging toilet + pump Setsan
- ☐ Hot water boiler Slim (50 l)
- ☐ Window opening inside (870 over floor)
- ☐ Window opening inside (1400 over floor) (with frosted glass)
- ☐ Window opening inside (870 over floor)
- ☐ Ventilation ø120
- ☐ Brush toilet

- ☐ Toilet paper holder
- ☐ Shelf steel
- ☐ Mirror (500x500)
- ① Bunk bed + storage place under – solid wood (2000 x 800) (with mattress)
- ② Cupboard (? x 500 x 1950) (4x shelf) (width based of space) – decor Kronospan Snow White
- ③ Cable for A/C (extra 2m)
- ⑥ Electric cooker – 2 hotplate
- ⑦ Sattelite cable (for TV) under roof, extra ca.1m – go to technic room (extra ca. 2m)
- ⑧ Shower set – shower tap + bar holder with shower head (ca. 900 mm)
- ⑨ Cupboard (500 x 500 x 1950) (4x shelf) – decor Kronospan Snow White



(Cabling and piping is not shown on the 3D views and drawings)

EWK frame – thickness 4mm

Cupboards – decor Kronospan Snow White

Notes: Switch board – incl. digital electricity meter

Interior height:	2200 mm	Total weight:	-
Color:	RAL 9010	Tare weight-estimate:	2500 kg
Floor:	PVC Supreme plus 110	Centre of wheels from rear side:	-
Date:	18.12.2023	Wheels:	-

EUROWAGON

Drawing number:
4366-96-2 EWK_2/2 (Münz)