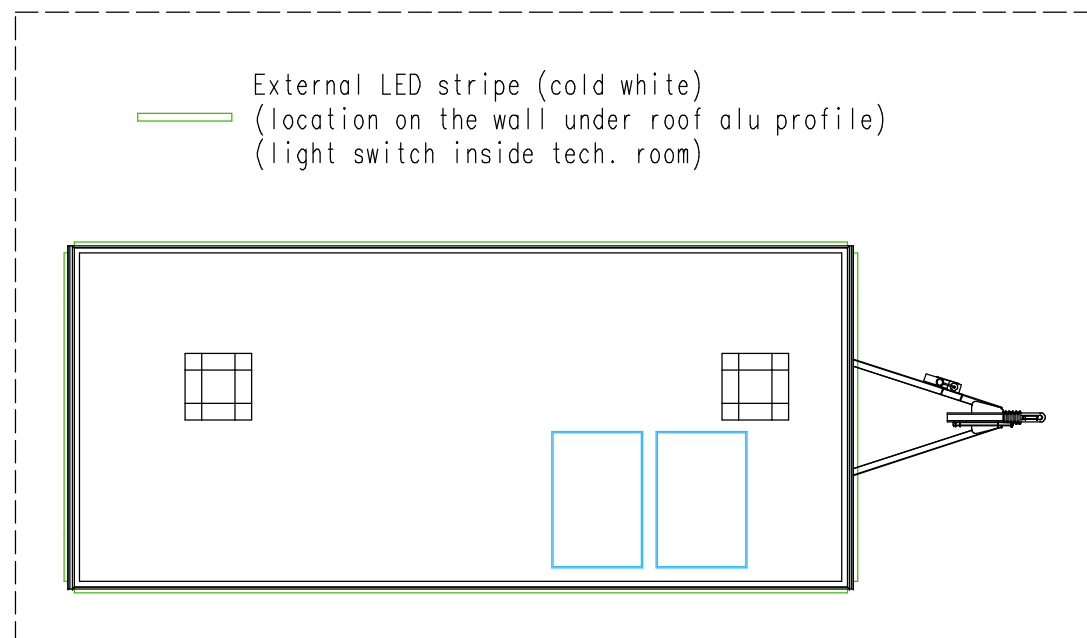
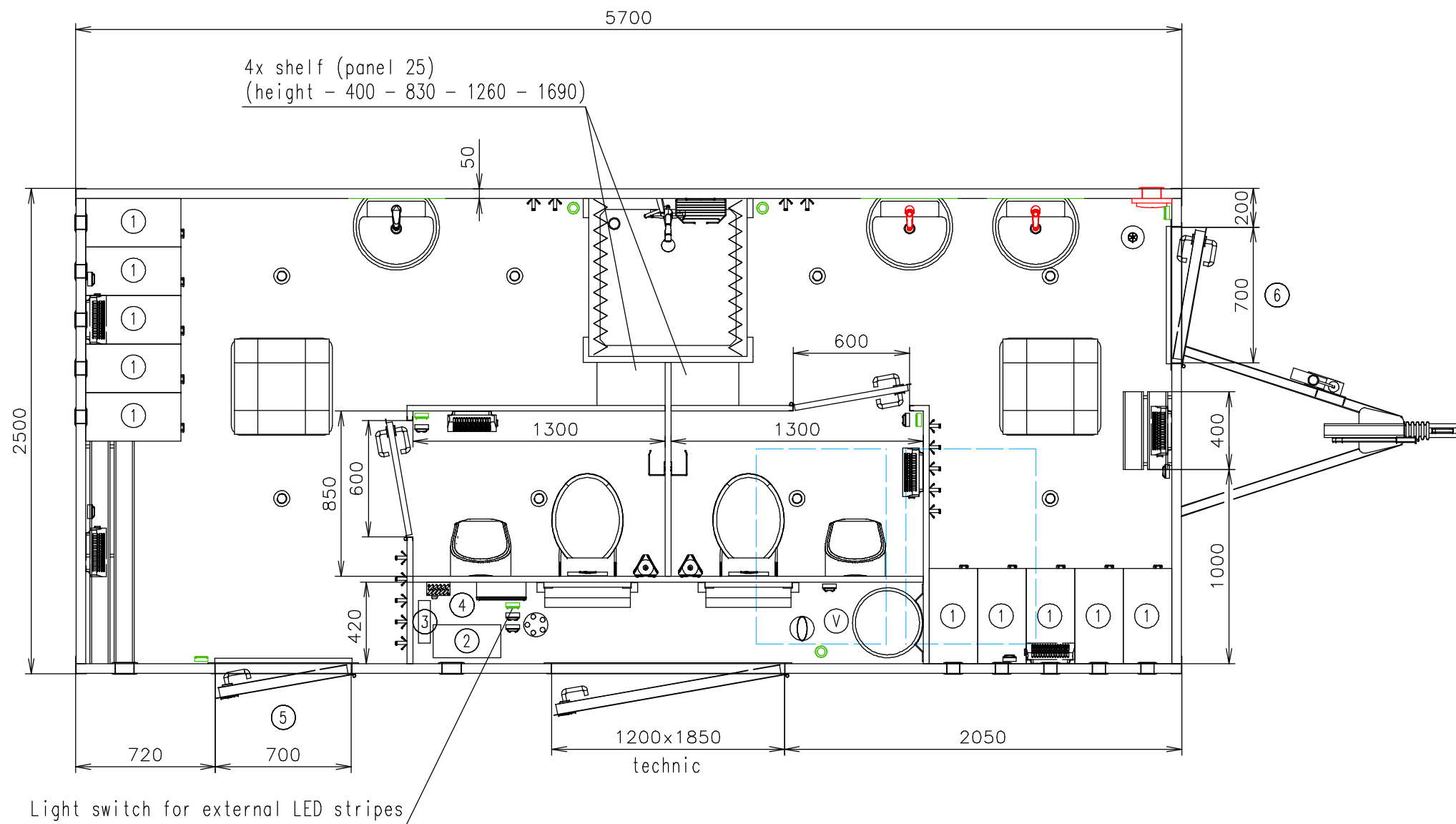


Connection hoses and cables	
Water hose:	✓
Waste water hose:	✗
Electric cable:	✓



(Cabling and piping is not shown on the 3D views and drawings)

- Solar cells same position as (3591-57)
- Battery only for internal spot lights
- Notes: Folio ? Chassis lights - with bulbs
- Water taps from DK

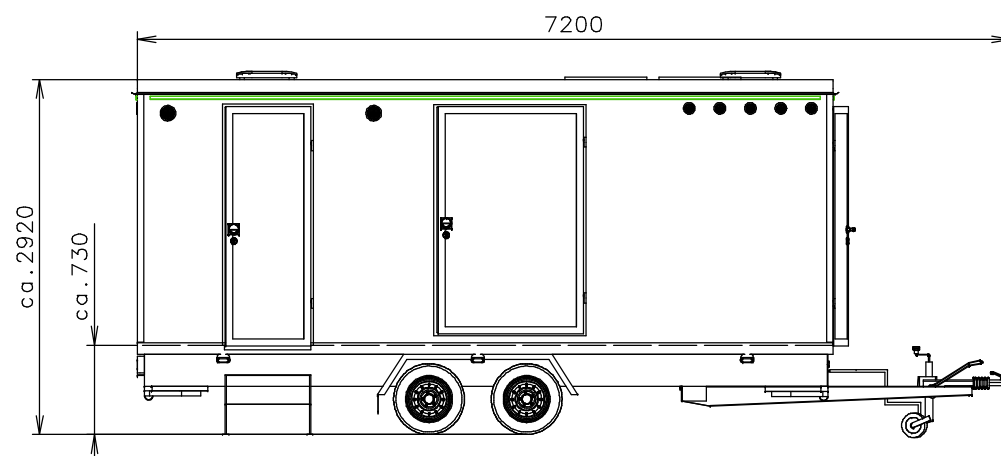
Interior height:	2100 mm	Total weight:	2600 kg
Color:	RAL 9010 + folio	Tare weight-estimate:	1900 kg
Floor:	PVC gray	Centre of wheels from rear side:	2790 mm
Date:	25.8.2020	Wheels:	165 R13C

**EUROWAGON**

Drawing number:  
3617-57-2\_1/2 (RJ)

Connection hoses and cables	
Water hose:	✓
Waste water hose:	✗
Electric cable:	✓

- Ⓥ Water connection 3/4" (through the floor) + filter + reduction valve
- Ⓜ Electric connection (through the floor) (400V-16A)
- Ⓛ Effluent connection ø110 (through floor)
- Ⓜ Power point
- Ⓛ Light switch
- Ⓜ Switch board (under roof)
- Ⓞ LED spotlight
- External LED stripe (cold white)
- Ⓜ Heating (500W)
- Ⓜ Heating (200W)
- Ⓜ Electric ventilator 230V (with sensor) (running 60 minutes after switch)
- Ⓞ Sensor LX 28B (230V)
- Solar panel
- Ⓞ Floor drain hole
- Ⓜ Shower (800x800) Cola
- Ⓜ Wash-basin Kolo (450x370) + sensor water tap DK
- Ⓜ Wash-basin Kolo (450x370) + standard water tap
- Ⓜ Hanging toilet
- Ⓜ Urinal - Vitra Siko (water flush)
- Ⓜ Hot water boiler Slim (80 l) + mixing water
- Ⓜ Roof window Dometic (400x400)
- Ⓜ Ventilation ø70
- Ⓜ Ventilation ø120
- Ⓜ Wooden bench
- Ⓜ Brush toilet
- Ⓜ Toilet paper holder
- Ⓜ Shelf steel
- Ⓜ Shower curtain
- Ⓜ Clothes hanger
- Mirror (500x500)
- ① Cupboard (sheet metal) (250x520x1700)
- ② Battery Banner Energy Bull 110Ah (12V)
- ③ Charger Multi XS 10A
- ④ Regulator EP Solar 20A
- ⑤ Standard free standing stairs
- ⑥ Standard hanging stairs - short



(Cabling and piping is not shown on the 3D views and drawings)

Solar cells same position as (3591-57)

Battery only for internal spot lights

Notes:

Folio ? Chassis lights - with bulbs

Water taps from DK

Interior height:	2100 mm	Total weight:	2600 kg
Color:	RAL 9010 + folio	Tare weight-estimate:	1900 kg
Floor:	PVC gray	Centre of wheels from rear side:	2790 mm
Date:	25.8.2020	Wheels:	165 R13C

**EUROWAGON**

Drawing number:

3617-57-2\_2/2 (RJ)