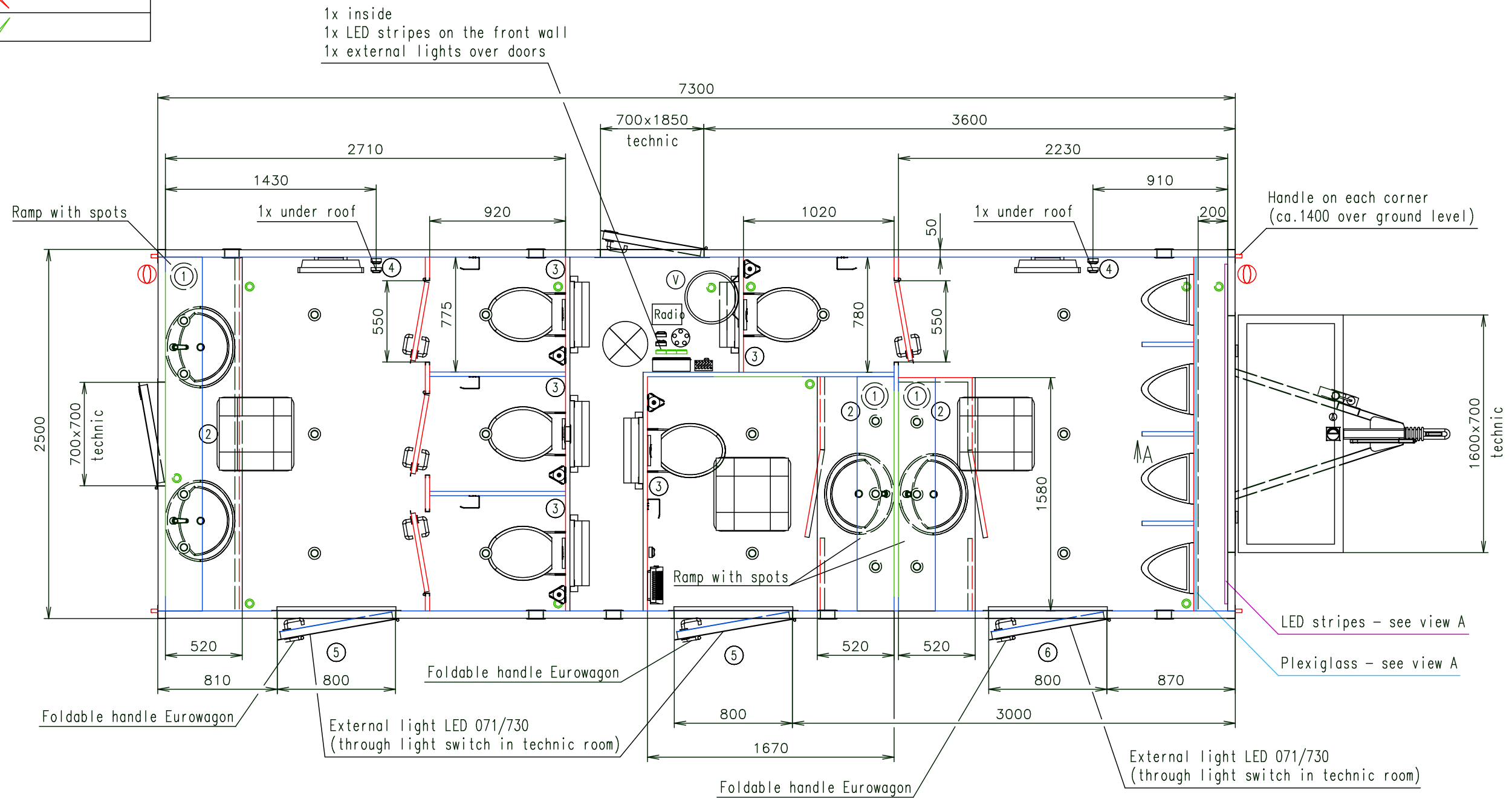


Connection hoses and cables	
Water hose:	✓
Waste water hose:	✗
Electric cable:	✓



Walls inside wagon in decors	
—	Decor Egger H1487 ST22 Bamberg Fichte
—	Decor Egger F206 ST9 Pietr Grigia

- Special water taps from DK
- Same keys at all wagons from the order
- VIP stairs + handrails - inside for transport
- Sheet metal (white) 100x100 (8 pcs.) - free loaded

Notes: Working desks in waterproof compact desk Egger - decor F206 ST9 Pietr Grigia

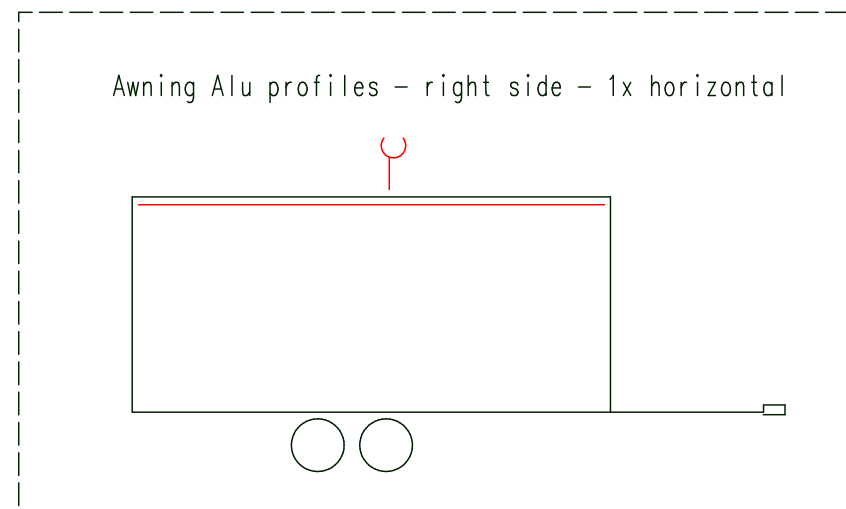
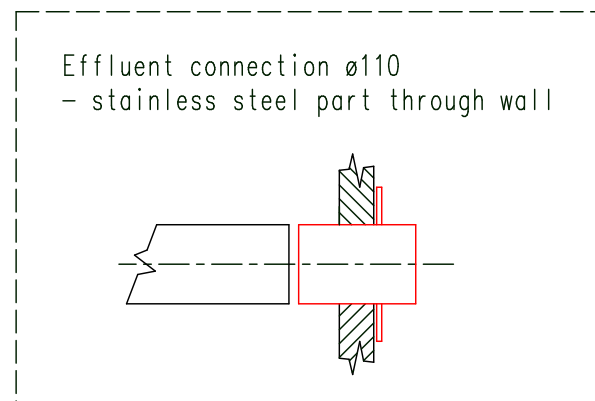
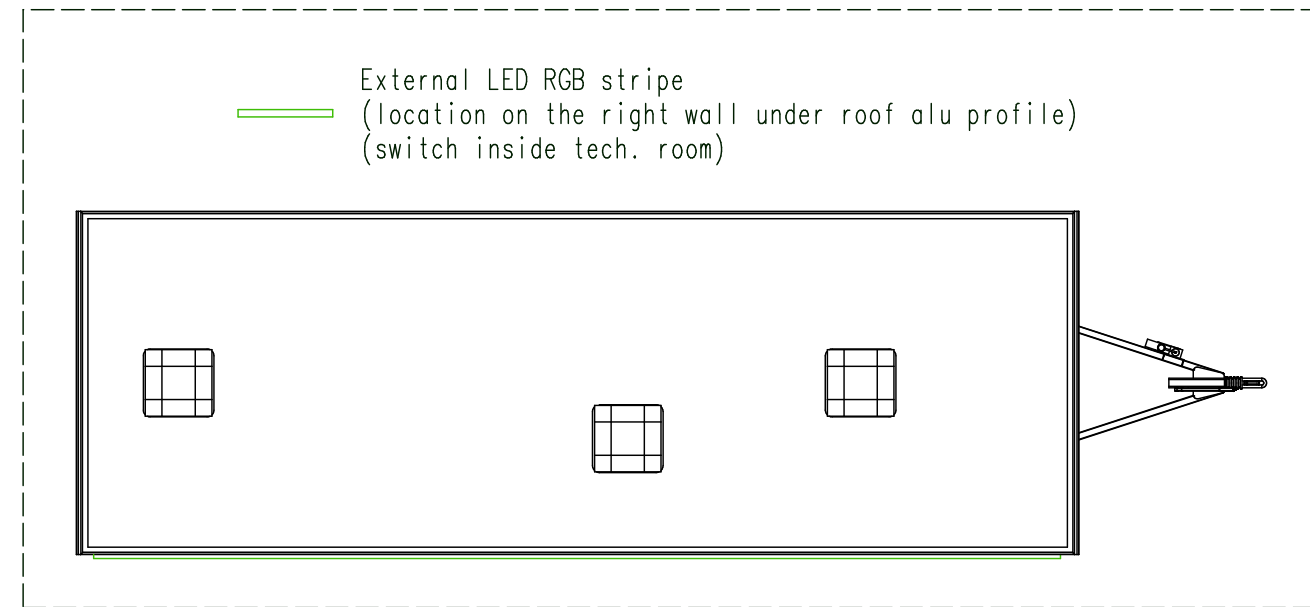
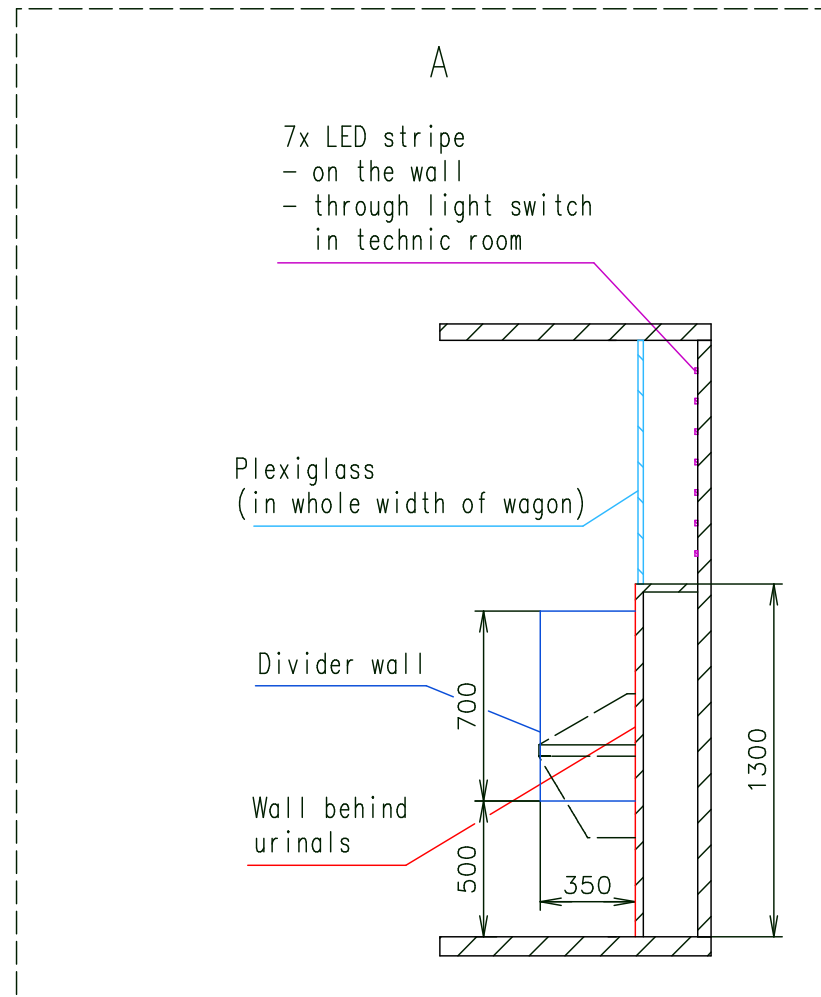
Interior height:	2200 mm	Total weight:	2600 kg
Color:	RAL 7042 (gray)	Tare weight-estimate:	2500 kg
Floor:	PVC Supreme plus 074	Centre of wheels from rear side:	3590 mm
Date:	2.3.2020	Wheels:	165 R13C



Drawing number:
3498-73-2_1/3

(Cabling and piping is not shown on the 3D views and drawings)

Connection hoses and cables	
Water hose:	✓
Waste water hose:	✗
Electric cable:	✓



Special water taps from DK

Same keys at all wagons from the order

VIP stairs + handrails - inside for transport

Sheet metal (white) 100x100 (8 pcs.) - free loaded

Notes: Working desks in waterproof compact desk Egger - decor F206 ST9 Pietr Grigia

Interior height:	2200 mm	Total weight:	2600 kg
Color:	RAL 7042 (gray)	Tare weight-estimate:	2500 kg
Floor:	PVC Supreme plus 074	Centre of wheels from rear side:	3590 mm
Date:	2.3.2020	Wheels:	165 R13C

EUROWAGON

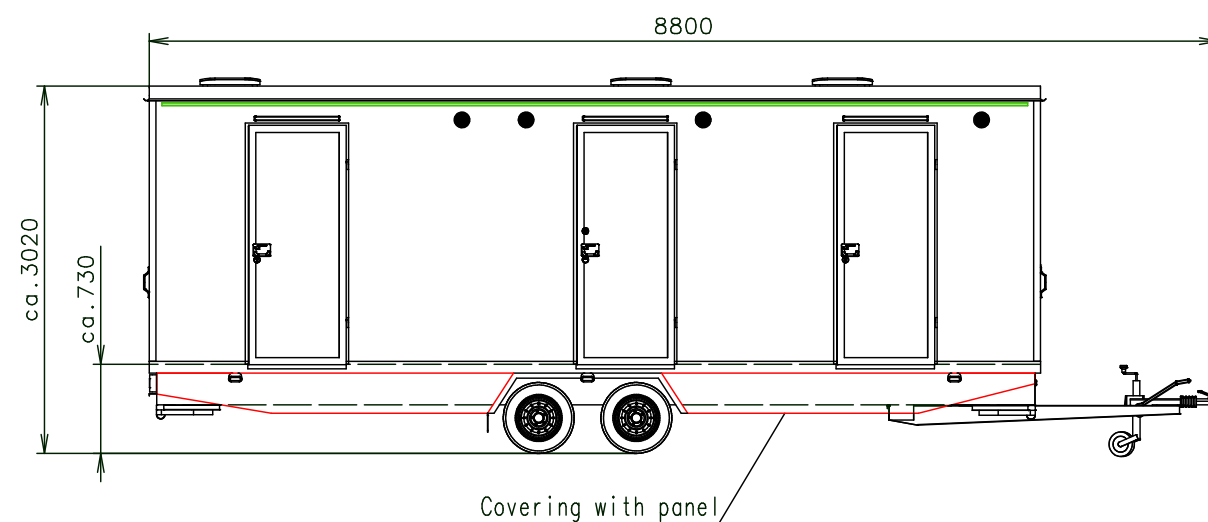
Drawing number:
3498-73-2_2/3

(Cabling and piping is not shown on the 3D views and drawings)

Connection hoses and cables	
Water hose:	✓
Waste water hose:	✗
Electric cable:	✓

- Ⓟ Water connection 3/4" (through the floor) + filter + reduction valve
- Ⓢ Electric connection (through the floor) (230V-16A)
- Ⓣ 2x effluent connection ø110 (through wall) - stainless steel part
- Ⓤ Power point
- Ⓥ Light switch
- Ⓦ Switch board (1200 over floor)
- Ⓧ LED sensorlight
- Ⓨ LED spotlight
- Ⓩ LED stripe
- External LED RGB stripe
- ▬ Heating (500W)
- ▭ Heating (750W)
- ▮ Heating (200W)
- Floor drain hole
- Ⓚ Wash-basin (built-in) Multi 1690 (550x470) + special sensor water tap DK (only mixed water)
- Ⓛ Urinal - Uridan (waterless)
- Ⓜ Urinal - Uridan (waterless) (lower by 150 mm than standard)
- Ⓨ Hanging toilet
- Ⓩ Hot water boiler Slim (30 l) + mixing water

- Ⓚ Roof window Dometic (400x400)
- Ⓛ Ventilation ø120
- Ⓧ Toilet paper holder
- Ⓨ Brush toilet (better quality)
- Ⓩ Mirror
 - ladies - 2200 x h1000
 - gents - 1400 x h1000
 - VIP toilet - 1400 x h1000 and 600 x h1800
- ① Speaker (white) - in the ramp
- ② Rubish bin
- ③ Stainless steel tube (vertically) for extra 3 toilet papers
- ④ Preparing for TV - under roof - antenna + HDMI cable (extra ca. 1m) (cable go to switch board)
- ⑤ VIP stairs (w800) + 1x handrail



(Cabling and piping is not shown on the 3D views and drawings)

- Special water taps from DK
- Same keys at all wagons from the order
- VIP stairs + handrails - inside for transport
- Sheet metal (white) 100x100 (8 pcs.) - free loaded

Notes: Working desks in waterproof compact desk Egger - decor F206 ST9 Pietr Grigia

Interior height:	2200 mm	Total weight:	2600 kg
Color:	RAL 7042 (gray)	Tare weight-estimate:	2500 kg
Floor:	PVC Supreme plus 074	Centre of wheels from rear side:	3590 mm
Date:	2.3.2020	Wheels:	165 R13C

EUROWAGON

Drawing number:
3498-73-3_3/3