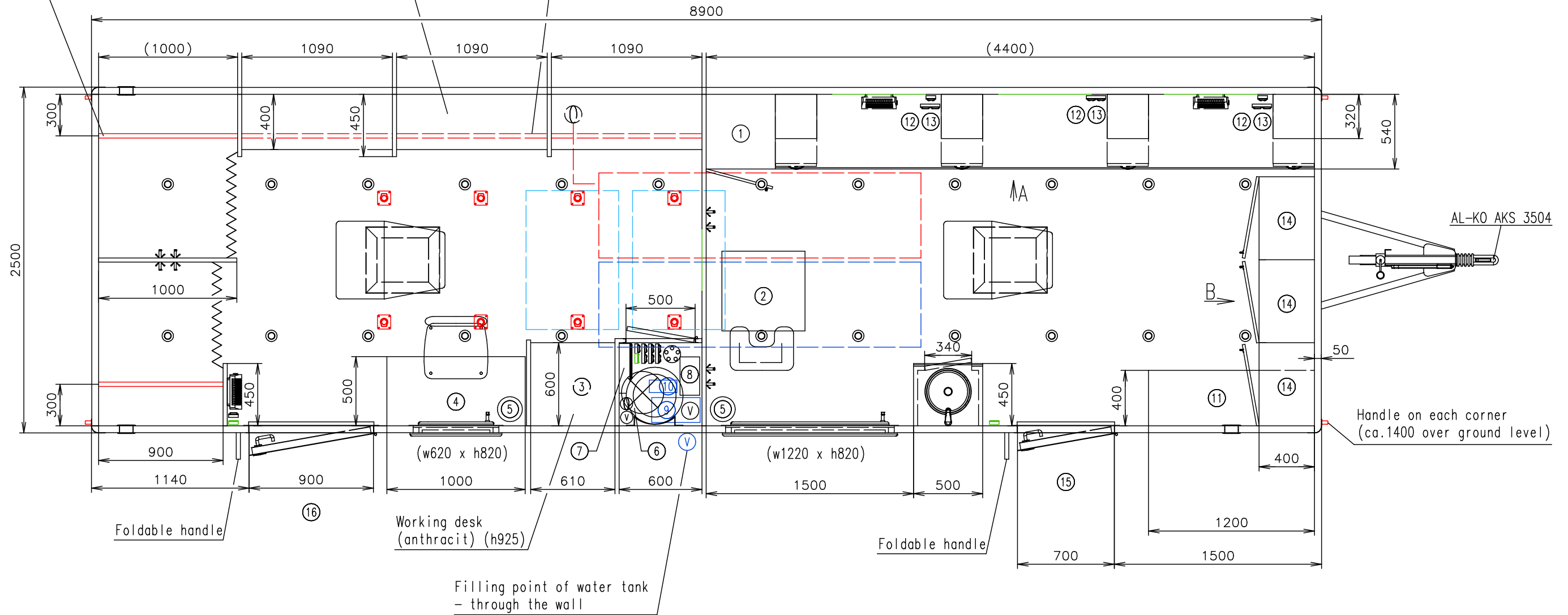


Connection hoses and cables	
Water hose:	✓
Waste water hose:	✗
Electric cable:	✓

Tube ø32 - 2 positions
(close to roof and in the middle)

Shelf (panel 25)
- 250 under roof

Tube ø32 - under shelf (fixed)



Battery only for spot lights

Notes: L- profile 20x20 (I1080) (3 pcs.) - free loaded

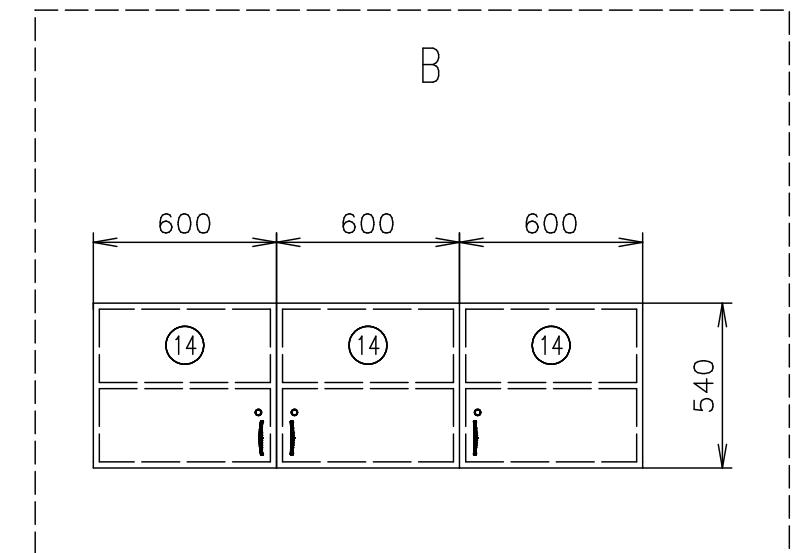
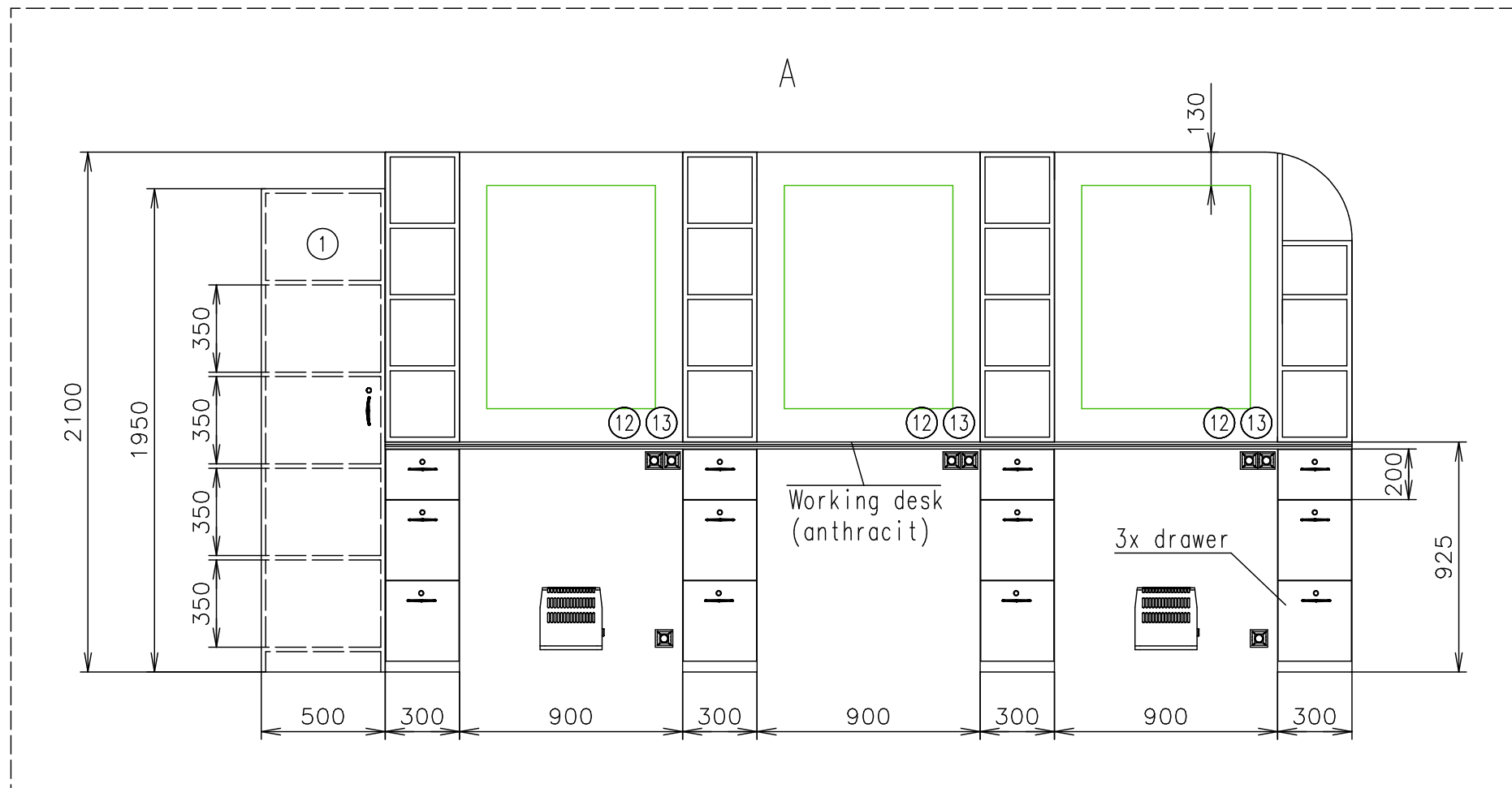
Interior height:	2100 mm	Total weight:	3500 kg
Color:	RAL 9010	Tare weight-estimate:	2800 kg
Floor:	PVC Jupiter 142702	Centre of wheels from rear side:	4650 mm
Date:	22.1.2018	Wheels:	185 R14C

Drawing number:
2814-89-2_1/3 (Lienert)

(Cabling and piping is not shown on the 3D views and drawings)

EUROWAGON

Connection hoses and cables	
Water hose:	✓
Waste water hose:	✗
Electric cable:	✓



Battery only for spot lights

Notes: L- profile 20x20 (I1080) (3 pcs.) – free loaded

Interior height:	2100 mm	Total weight:	3500 kg
Color:	RAL 9010	Tare weight-estimate:	2800 kg
Floor:	PVC Jupiter 142702	Centre of wheels from rear side:	4650 mm
Date:	22.1.2018	Wheels:	185 R14C

(Cabling and piping is not shown on the 3D views and drawings)

EUROWAGON

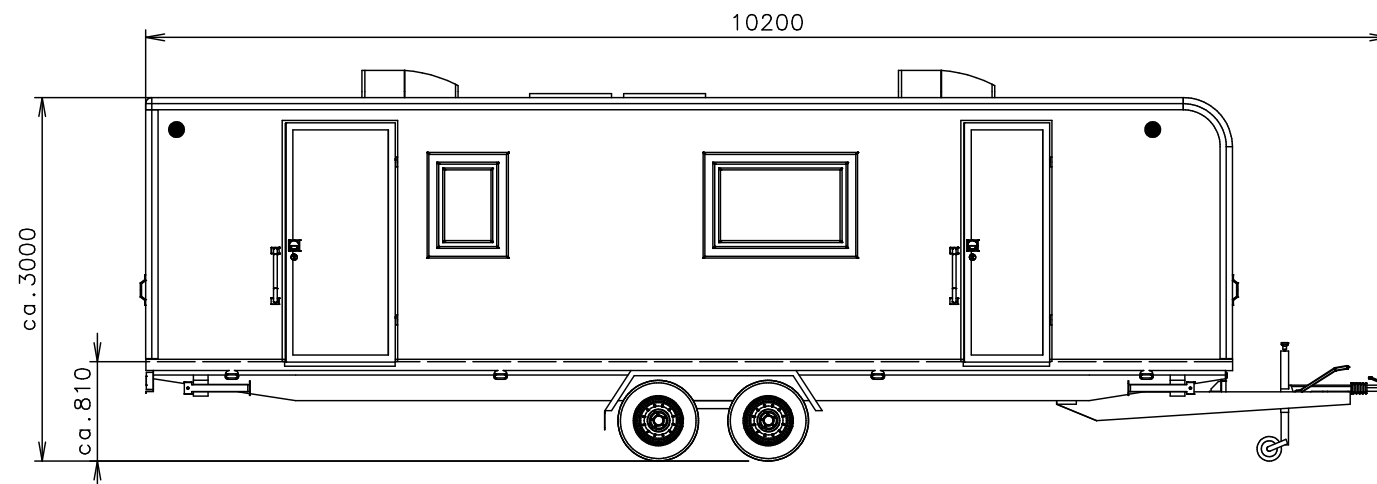
Drawing number:
2814-89-2_2/3 (Lienert)

Connection hoses and cables	
Water hose:	✓
Waste water hose:	✗
Electric cable:	✓

- Ⓥ Water connection 3/4" (through the floor)
- Ⓜ Electric connection (through the floor) (400V-16A)
- Ⓛ Effluent connection 6/4"
- Ⓧ Power point
- Ⓨ Double power point
- Ⓩ Light switch
- ⓐ Switch board (1200 over floor)
- ⓑ Sensorlight
- ⓓ Spot light
- ⓔ Heating (500W)
- ⓕ Roof A/C+heating (Dometic Freshjet 1700) + external sheet metal cover
- ⓖ Solar panel
- ⓗ Sink ø335 (stainless steel) + standard water tap
- ⓘ Hot water boiler (30 l)

- ⓙ Waste-water tank (under floor) (isolation, heated) (12330 x w615 x h180 = 200l) + float sensor + indicator
- ⓚ Water tank (under floor) (isolation, heated) (12330 x w615 x h180 = 200l) + float sensor + indicator
- ⓛ Window opening inside (870 over floor) + roller (white) (inside)
- ⓜ Window opening inside (870 over floor) + roller (white) (inside)
- ⓝ Ventilation ø120
- ⓞ Chair
- ⓐ Curtain
- ⓑ Clothes hanger
- ⓓ Fixing eye in floor (UP-01)
- ⓔ Mirror (450 x h1800)
- ⓕ Mirror (680 x h900)
- ① Cupboard (500 x 540 x 1950) (4x shelf)
- ② Hairdresser washing box

- ③ Washing machine with dryer (combination - one machine)
- ④ Foldable desk (anthracit) (h740)
- ⑤ Speaker - in the roof
- ⑥ Radio + CD + USB
- ⑦ Regulator EP Solar 20A
- ⑧ Water pump Grundfos hydrojet JP5 (230V)
- ⑨ Battery Banner Energy Bull 110Ah (12V)
- ⑩ Charger Multi XS 10A
- ⑪ Bench with storage (upholstery) (h440)
- ⑫ Cable 230V (3x2,5mm) - over desk (extra ca.1m) (preparing for power points) - cable directly go to switch board
- ⑬ Cable 230V (3x2,5mm) - over desk (extra ca.1m) (preparing for lights) - cable directly go to switch board
- ⑭ Cupboard under roof (sketch)
- ⑮ VIP stairs (w 700)
- ⑯ VIP stairs (w 800)



(Cabling and piping is not shown on the 3D views and drawings)

Battery only for spot lights

Notes: L-profile 20x20 (11080) (3 pcs.) - free loaded

Interior height:	2100 mm	Total weight:	3500 kg
Color:	RAL 9010	Tare weight-estimate:	2800 kg
Floor:	PVC Jupiter 142702	Centre of wheels from rear side:	4650 mm
Date:	22.1.2018	Wheels:	185 R14C

EUROWAGON

Drawing number:
2814-89-2_3/3 (Lienert)