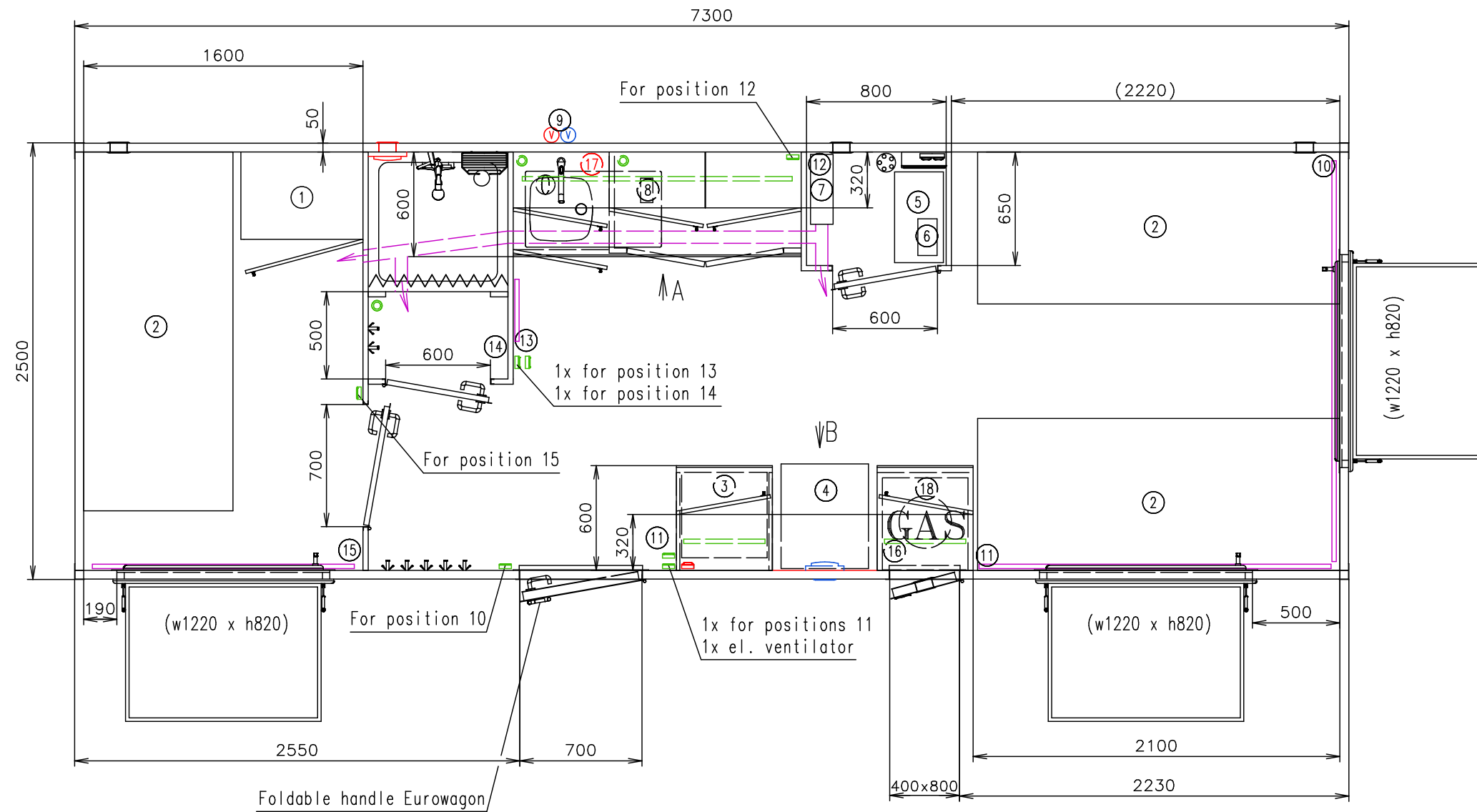


Connection hoses and cables	
Water hose:	✗
Waste water hose:	✗
Electric cable:	✗



Water instalation - only - pipe of cold water from position 8 to sink, shower and position 9 + pipe of hot water from position 9 to sink and shower - made by EW - in front of the water pump (incl. pump) - made by customer

Gas water heater (dimensions, type?) - supply and finished by customer

Sheet metal plate (white) (100x100, 5 pcs.) + rivets (50 pcs.) - free loaded

Notes: Preparing for gas water heater - positions 9 and 17

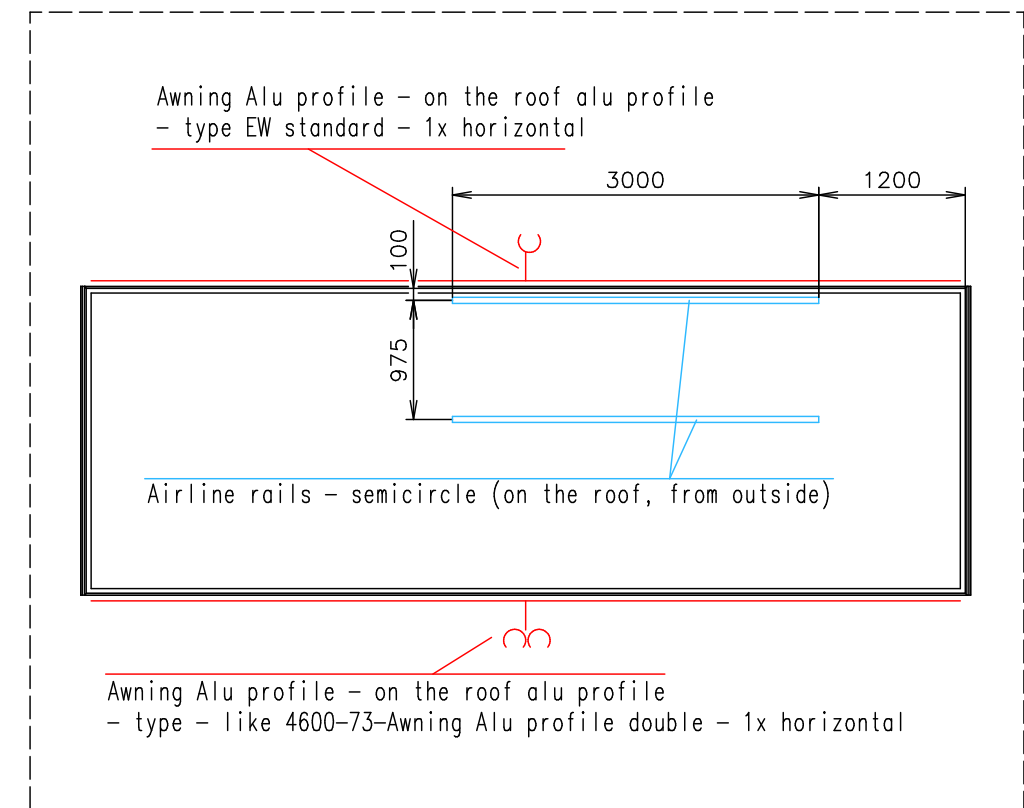
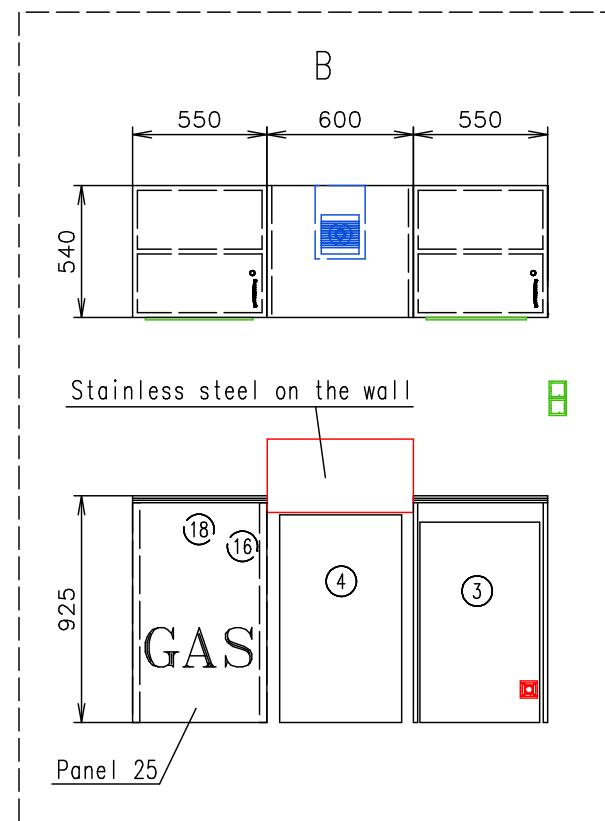
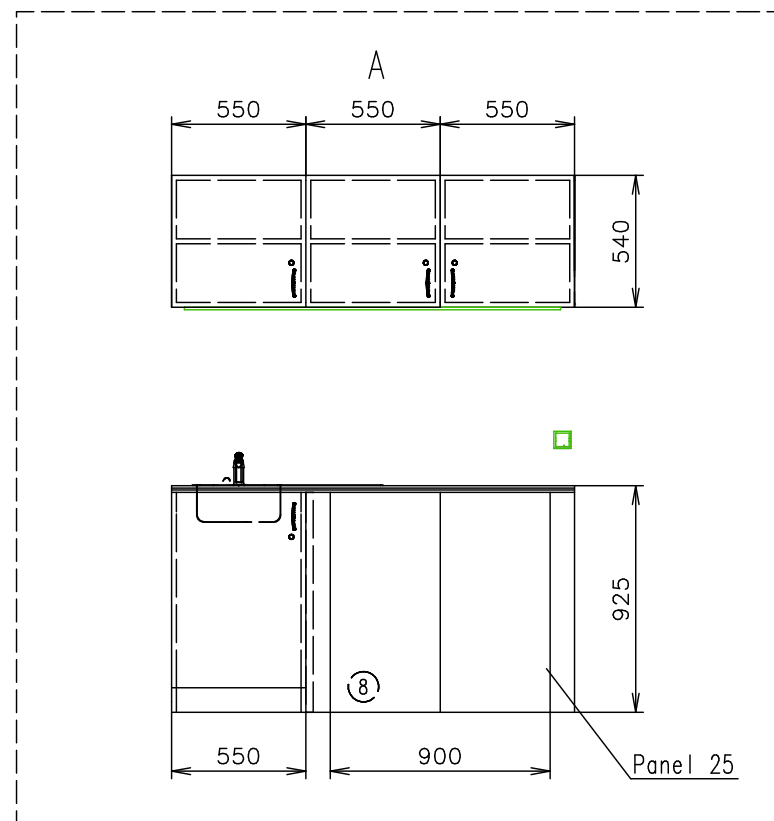
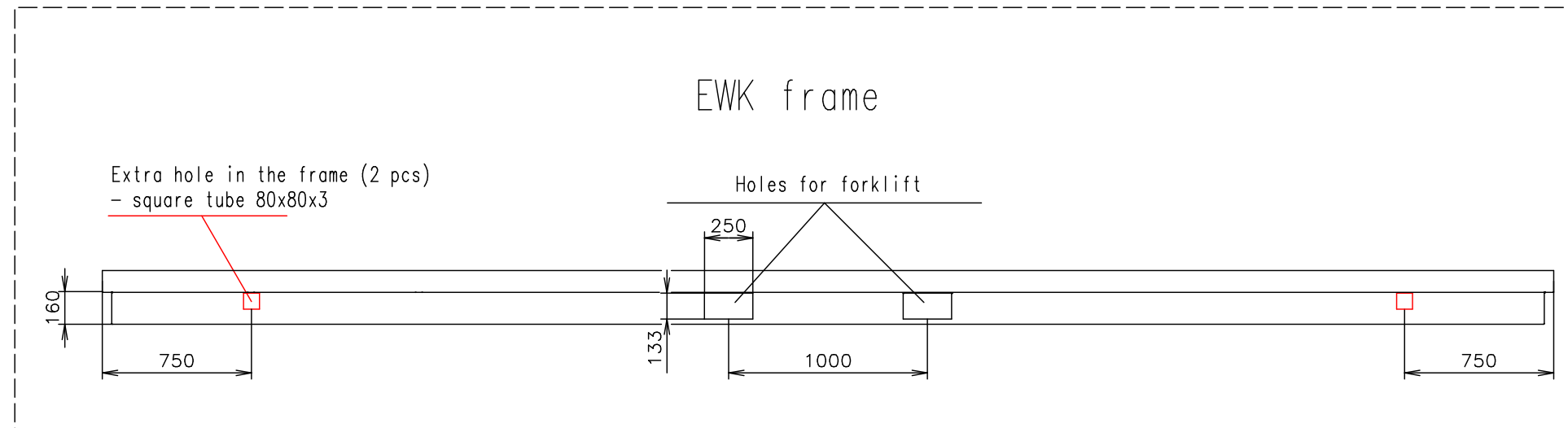
Interior height:	2200 mm	Total weight:	-
Color:	RAL 7042 (gray)	Tare weight-estimate:	1800 kg
Floor:	PVC Supreme plus 110	Centre of wheels from rear side:	-
Date:	3.10.2024	Wheels:	-

(Cabling and piping is not shown on the 3D views and drawings)

EUROWAGON

Drawing number:
4600-73-1 EWK_1/3

Connection hoses and cables	
Water hose:	✗
Waste water hose:	✗
Electric cable:	✗



Water instalation - only - pipe of cold water from position 8 to sink, shower and position 9 + pipe of hot water from position 9 to sink and shower - made by EW - in front of the water pump (incl. pump) - made by customer

Gas water heater (dimensions, type?) - supply and finished by customer

Sheet metal plate (white) (100x100, 5 pcs.) + rivets (50 pcs.) - free loaded

Notes: Preparing for gas water heater - positions 9 and 17

Interior height:	2200 mm	Total weight:	-
Color:	RAL 7042 (gray)	Tare weight-estimate:	1800 kg
Floor:	PVC Supreme plus 110	Centre of wheels from rear side:	-
Date:	3.10.2024	Wheels:	-

EUROWAGON

Drawing number:
4600-73-1 EWK_2/3

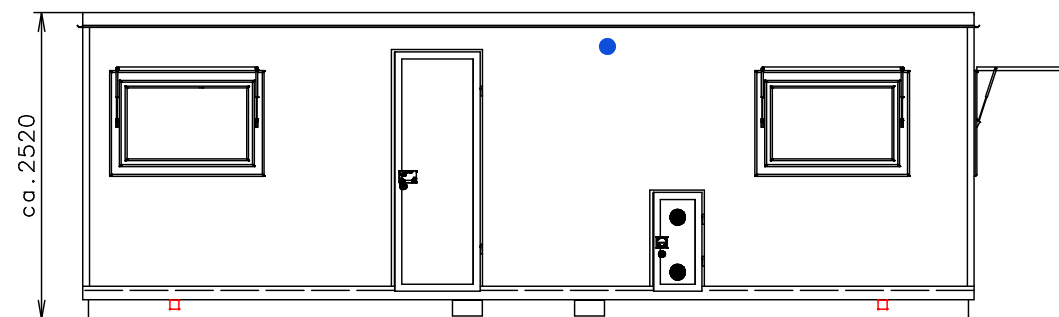
(Cabling and piping is not shown on the 3D views and drawings)

Connection hoses and cables	
Water hose:	✗
Waste water hose:	✗
Electric cable:	✗

- ⊙ Electric connection – only free cable (10 mm²) from switchboard in the technical room (extra ca. 2m)
- Ⓛ Effluent connection ø40 (through floor)
- Ⓥ Connection point cold water for gas water heater (intlet) – like foto 4600-73-connection point of water – customer supply
- Ⓡ Connection point hot water from gas water heater (outlet) – like foto 4600-73-connection point of water – customer supply
- ⊏ Light switch
- Ⓜ Power point
- Ⓜ Power point 12V
- ⎓ Switch board (under roof) + car fuse box for all 12V cables
- LED stripe – indirect light – finished by customer
- LED stripe – finished by customer
- Ⓜ Electric ventilator 12V (with light) (delay 5 minutes)
- Ⓜ Electric ventilator 12V (with own switch)

- ⊙ Floor drain hole
- Ⓛ Stainless steel shower (800x800) – SLSN 07
- Ⓛ Kitchen sink with drainer Alveus Basic 150 + standard water tap
- Window opening inside (960 over floor) – anthracit color of frame from outside
- ⊏ Ventilation ø120
- Ⓜ Shower curtain
- Ⓜ Shelf steel
- Ⓜ Clothes hanger
- ① Cupboard (700 x 500 x 1950)
- ② Place for bed (2070 x 795)
- ③ Fridge Dometic NRX 90V (12V) (dimensions of cabling based on lenght – 4 mm² (0-4 m), 6 mm² (4-6 m), 10 mm² (more than 6m))
- ④ Gas stove – 4 hotplate + oven – type Amica SPP 201 ZX (white)

- ⑤ Battery Banner Energy Bull 230Ah (12V)
- ⑥ Charger Multi XS 25A
- ⑦ Heating Truma VarioHeat Eco
- ⑧ Prepared for water pump – cable 2x4mm² (12V)
Preparing for gas water heater (on the wall from outside)
– cold water (inlet) – height over ground floor?
– hot water (outlet) – height over ground floor?
– connection points like foto 4600-73-connection point of water – customer supply
- ⑩ Preparing for LED stripe – indirect light (cable 12V – 2x2,5mm², extra ca.1m)
- ⑪ Preparing for LED stripe (cable 12V – 2x2,5mm², extra ca.2m)
- ⑫ Preparing for LED stripe (cable 12V – 2x2,5mm², extra ca.2m)
- ⑬ Preparing for LED stripe – indirect light (cable 12V – 2x2,5mm², extra ca.1m)
- ⑭ Preparing for LED stripe – indirect light (cable 12V – 2x2,5mm², extra ca.1m)
- ⑮ Preparing for LED stripe – indirect light (cable 12V – 2x2,5mm², extra ca.1m)
- ⑯ Distributor of gas pipes (3x outlet – stove, heater and water heater) (like foto 4600-73-gas distributor)
- ⑰ Preparing for gas water heater – gas connection – only pipe under floor of EWK
- ⑱ Gas regulator



Water instalation – only – pipe of cold water from position 8 to sink, shower and position 9 + pipe of hot water from position 9 to sink and shower – made by EW – in front of the water pump (incl. pump) – made by customer

Gas water heater (dimensions, type?) – supply and finished by customer

Sheet metal plate (white) (100x100, 5 pcs.) + rivets (50 pcs.) – free loaded

Notes: Preparing for gas water heater – positions 9 and 17

Interior height:	2200 mm	Total weight:	–
Color:	RAL 7042 (gray)	Tare weight-estimate:	1800 kg
Floor:	PVC Supreme plus 110	Centre of wheels from rear side:	–
Date:	3.10.2024	Wheels:	–

EUROWAGON

Drawing number:
4600-73-1 EWK_3/3

(Cabling and piping is not shown on the 3D views and drawings)